



## ADMIRALS COURT, SHAD THAMES, LONDON, 2 BED APARTMENT

£3,200 PER MONTH

A Hemmingfords Collection- Beautiful two double bedroom, two bathroom split level apartment with a wrap around balcony in Shad Thames.

Enter on the top floor which has the large, light and bright master bedroom and an en-suite with plenty of wardrobe space. Then on the lower floor there is a larger living and dining room with access to the large balcony that over looks the quiet and quaint square below.

The second double bedroom also has built in wardrobes and access to a second balcony, there is a large bathroom and a contemporary and separate kitchen which also joins this balcony.

If location is important then this apartment ticks the boxes, you are in the middle of Shad Thames, with Tower Bridge a few steps away and with London

**Hemmingfords**

Admirals Court, SE1  
 Approximate Gross Internal Area  
 880 sq ft / 82 sq m

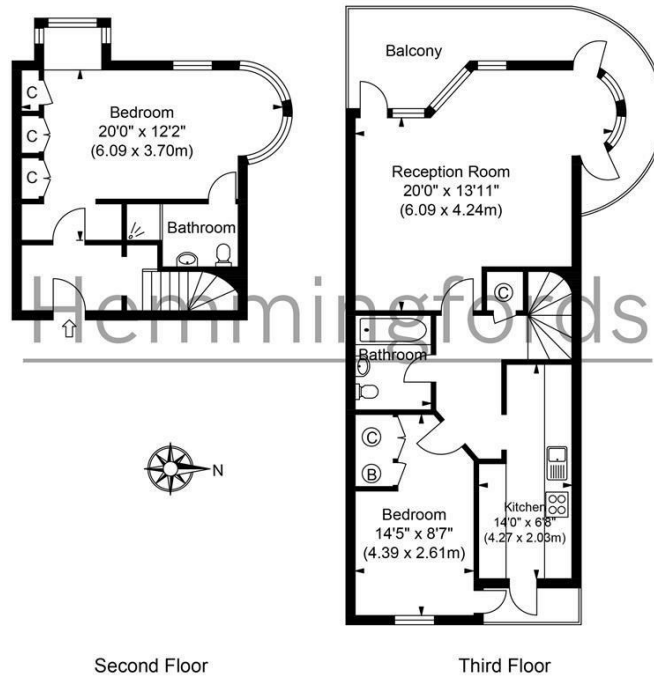


ILLUSTRATION FOR IDENTIFICATION PURPOSES ONLY  
 ALL MEASUREMENTS ARE MAXIMUM, AND INCLUDE WINDOW BAYS AND WARDROBES WHERE APPLICABLE  
 THIS PLAN MUST NOT BE REPRODUCED BY ANY OTHER PERSON WITHOUT PERMISSION



Energy Efficiency Rating		
	Current	Potential
Very energy efficient - lower running costs		
(92 plus) A		
(81-91) B		
(69-80) C		
(55-68) D		
(39-54) E	51	54
(21-38) F		
(1-20) G		
Not energy efficient - higher running costs		
<b>England &amp; Wales</b>	EU Directive 2002/91/EC	

Agents Note: Whilst every care has been taken to prepare these particulars, they are for guidance purposes only. All measurements are approximate and are for general guidance purposes only and whilst every care has been taken to ensure their accuracy, they should not be relied upon and potential buyers/tenants are advised to recheck the measurements

Hemmingfords Lettings  
 34 Upper Street  
 London  
 N1 0PN

020 3890 7470  
 info@hemmingfords.co.uk  
 www.hemmingfords.co.uk

**Hemmingfords**